



Series 81

Turbo



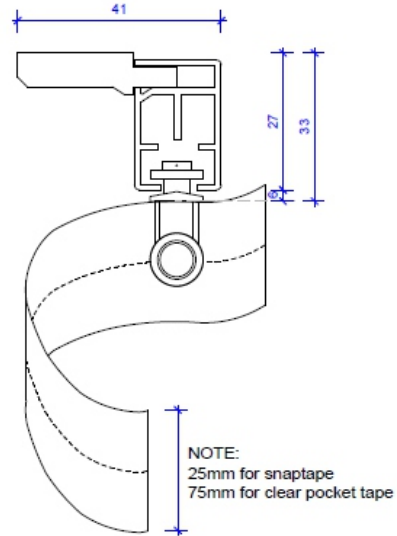
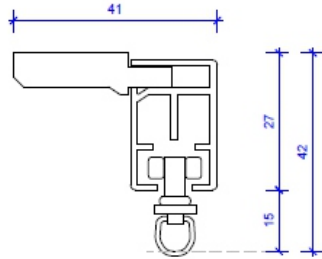
Oslo Series 81 Turbo track at 26mm high and 17mm wide is incredibly slim with clean lines and the "Easy-Clip" bracket that is concealed from view is a breakthrough in the industry.

The Polyurethane Belt is impregnated with Kevlar for remarkable strength and smooth silent operation. Drive Unit uses double metal bearings.

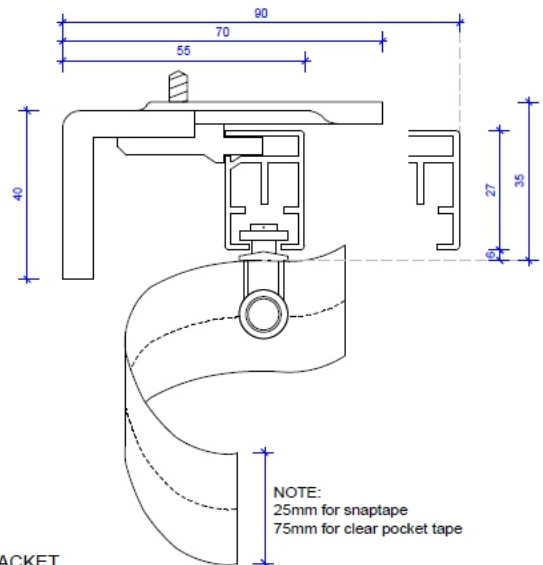
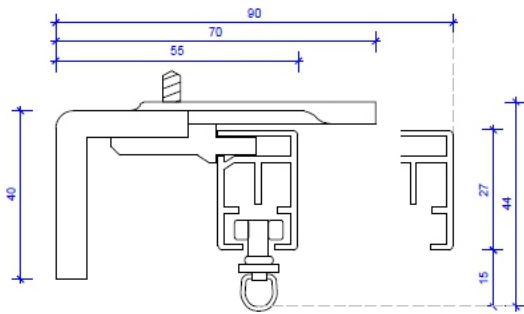
The Motors are powerful but quiet 75 watt. Series 84 Motor that have all the State of the art functions can be bent in continuous curves or to a tight radius of 150mm.



Series 81 Turbo Bracket Dimensions

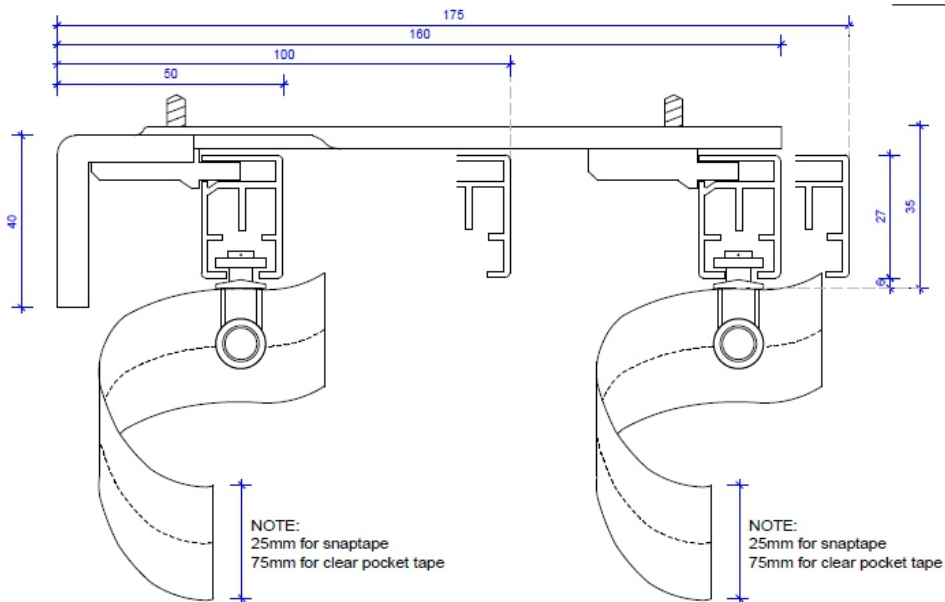


Series 81 Turbo motorised
EASY CLIP CEILING FIX
No 7453

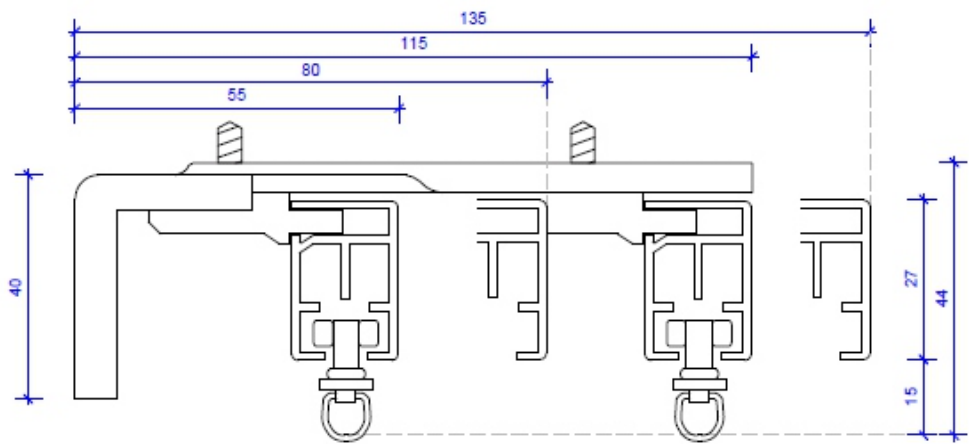


Series 81 Turbo motorised
FACE FIX 70mm PROJECTION BRACKET
No 7455

Series 81 Turbo Bracket Dimensions



Series 81 Turbo motorised
DOUBLE FACE FIX 160mm PROJECTION BRACKET
No 7455L



Series 81 Turbo motorised
DOUBLE FACE FIX 115mm PROJECTION BRACKET
No 7455s



SERIES 81 PELMET FITTING DIMENSIONS

Overall Track Length

To allow for the installation of motors onto the track, the overall length of the track must be shorter than the wall to wall measurements, and inside pelmets, by 25mm.

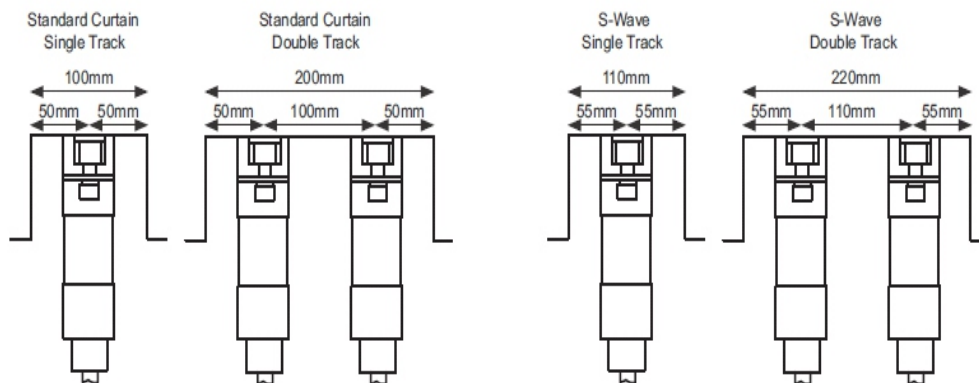


Pelmet Measurements

The pelmet measurements below are a suggested minimum size for a standard weight curtain. Heavier curtains will require a larger pelmet.

Note: All measurements are given for a 150mm radius bend. Large bends will require wider pelmets.

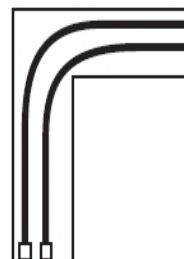
Straight Tracks



90° Bends



120mm Standard Curtains
155mm S-Wave



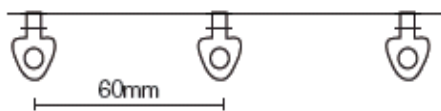
180mm 2x Standard Curtains
215mm 1x Standard & 1x S-Wave
280mm 2x S-Wave

Series 81

S-Wave System



SERIES 81 TURBO MOTORISED S-WAVE SYSTEM USING TP 802 CLEAR WAVE (POCKET) TAPE

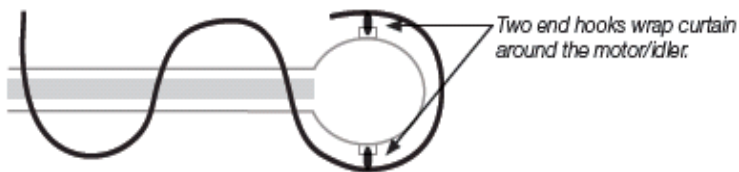


120mm
Curtain hook in every 8th pocket = 100%

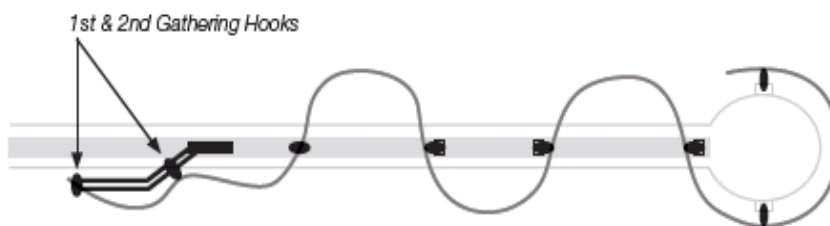


105mm
Curtain hook in every 7th pocket = 80%

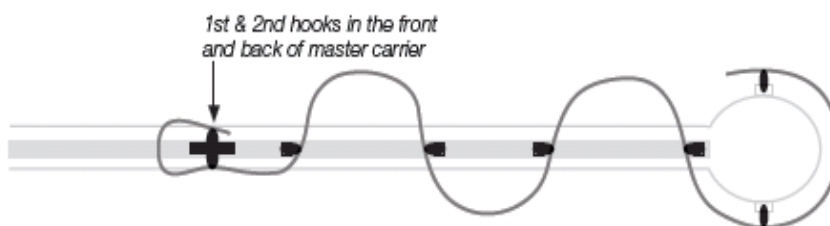
- 100% Fullness - The tape is supplied so every 8th pocket is to have a gathering hook.
- 80% Fullness - The tape is supplied so every 7th pocket is to have a gathering hook.
- The length of tape supplied is sufficient to wrap the curtain around the motor/idler using two hooks.



- Two of the hooks on the other end are used for either the overlap arm or master carrier



- For the Master Carrier on a centre open curtain, the 1st and 2nd hooks go either side of the master carrier creating a folded edge.





SERIES 81 MOTORISED S-WAVE SYSTEM USING TP 802 CLEAR WAVE (POCKET) TAPE

CENTRE OPENING CURTAIN OPTIONS

For the most consistent wave appearance, two Master Carriers can be used.



Alternatively if an overlap is required for better light block out an overlap arm can be used on one of the master carrier blocks.

